

NeptuneSystems AquaControllers

AquaController Apex Jr Quick Start Guide



(optional)



Connecting the system

The Apex Jr and Apex display (optional) should be securely mounted in a location free from moisture. Use wood screws through the mounting tabs of the Apex Jr.

- Mount all modules above the water line of the aquarium.
- Be sure to utilize drip loops on all power cords, AquaBus cables and probe cables, Ethernet cables, etc.
- Plug the EnergyBar or the Apex Jr into a circuit protected by a Ground Fault Circuit Interrupter (GFCI).



WARNING: Water damage will void your warranty! Mount all modules in locations safe from moisture exposure.

Plug the Apex Jr's temperature probe into the temperature connector.

Plug the Apex Jr's Ethernet cable into the Ethernet jack on the Jr base module, and plug the other end of the Ethernet cable into an unused port on your router. Once the Ethernet connection has been established apply power to the Apex Jr base module.

Network Setup

The AquaController Apex ships with DHCP enabled which allows the Apex base module to automatically acquire a network IP address from the network to which it is connected. Please note that the Apex should be plugged into your router; plugging the Apex Jr directly into your PC will not work unless the PC's Ethernet port has been properly configured.

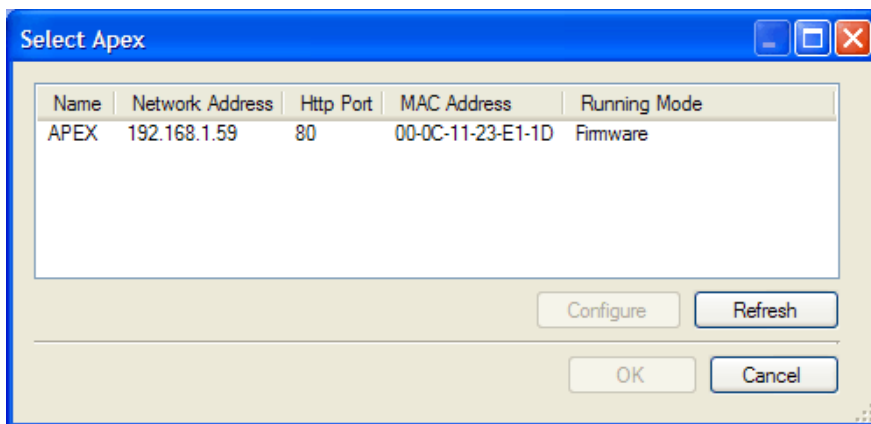
Once configured, the Apex Web Interface can be accessed by typing the following URL into a compatible web browser from a computer browser on the same network:

<http://apex>

NOTE: Accessing your AquaController Apex using the host name will not work from Macintosh computers. Access your Apex using the IP address which can be found by looking in your routers DHCP table or using the Apex flash utility described below.

When presented with the login screen, type the default user name "admin" and password "1234" (without the quote marks).

If the Apex's IP address is unknown or has been improperly configured then the Apex Browse Utility (included on the Apex CD) can be used to find and change the Apex's network settings. Run the 'Apex Browse Utility.exe' on the CD. Click the refresh button if your Apex system is not listed. If an Apex system is present on the network it will show up in the Apex search window show below:



In the above example the Apex's IP address is 192.168.1.59 and could be accessed by putting this IP address into the web browser's address bar. The IP address and other network settings of the Apex can be changed through the flash utility as well. Left click on the Apex IP address in the above window and then left click on the

configure button. In the window that pops up set the Apex's networks settings appropriately.

Configuring Outlets

The AquaController Apex includes several programming Wizards to program common outlet functions. These allow you to easily program an outlet without learning the Apex programming language and process.

To program an outlet from the Web Interface:

Configuration – Outlet Setup – Status – from the Outlet drop down box near the top of the screen, choose the outlet to edit.

Outlet Name: the name of the outlet that appears on the Status Screen and is referred to in the program.

Control Type: choose to use a Wizard (Light, Pump, Heater, etc) or choose Advanced to custom program the outlet.

Icon: choose the icon that will represent this outlet on the Status Screens

The bottom half of this page will either allow you to edit the various parameters of the Wizard you have selected for this outlet in the Control Type field (see the section **Programming with Wizards** for more information) or if Advanced is selected, you can edit the program for the outlet (see the section titled **Advanced Programming** for more information).

LIGHT

This Wizard is used to program lights and includes a safety feature that will turn off lighting if the temperature of the tank gets too high.

Fallback – the state the outlet should switch to if contact between the EnergyBar and base module is lost (on or off).

On time – the time the light should turn on in 24 hour format (hours:minutes).

Off time – the time the light should turn off in 24 hour format (hours:minutes).

Shutdown probe – the name of the temperature probe that should be monitored to shutdown the outlet in an overheating situation (Temp, TempA, Tmpx3, etc).

Device shutdown value – the temperature that must be reached to turn off the outlet.

Hysteresis – amount of time to leave the lights off (to prevent rapid cycling of the outlet).

PUMP

This Wizard is used to program pumps or power heads to oscillate on and off.

Fallback – the state the outlet should switch to if contact between the EnergyBar and base module is lost (on or off).

Initial Off Time – when this outlet first starts, this is the amount of time the pump should be off before proceeding to the On Time (minutes:seconds).

On Time – after the Initial Off Time expires, this is the amount of time the pump should be On before proceeding to the Off Time (minutes:seconds).

Off Time – after the On Time expires, this is the amount of time the pump should be Off before proceeding to Initial Off Time (minutes:seconds).

Feed timer – the Feed Timer that should turn off this pump (A, B, C or D).

Feed timer delay – the time after the Feed Timer expires before starting the pump back up.

HEATER

The Heater Wizard is used to program heater outlets. See the section titled Heater in the Apex setup and programming guide for help in choosing on and off set points. The settings for this Wizard are:

Fallback – the state the outlet should switch to if contact between the EnergyBar and base module is lost (on or off).

Probe name – the name of the temperature probe that should be used to control this outlet (Temp, TempA, Tmpx3, etc).

On temperature – the temperature at which the heater should turn On.

Off temperature – the temperature at which the heater should turn Off.

CHILLER

The Chiller Wizard is used to program chiller outlets. See the section titled Chiller in the Apex setup and programming guide for help in choosing on and off set points. The settings for this Wizard are:

Fallback – the state the outlet should switch to if contact between the EnergyBar and base module is lost (on or off).

Probe name – the name of the temperature probe that should be used to control this outlet (Temp, TempA, Tmpx3, etc).

On temperature – the temperature at which the chiller should turn On.

Off temperature – the temperature at which the chiller should turn Off.

Further Information

For complete information on configuring and using the Apex Jr please see the complete owner's manual included on the Apex CD. You can also visit our website www.neptunesys.com for the latest product information. In addition there is a very active user supported forum in the Neptune Systems' sponsor section of reefcentral.com.

Neptune Systems, Inc.

6280 San Ignacio Ave. Unit #E

San Jose, CA 95119

<http://www.neptunesys.com>

email: support@neptunesys.com

Phone 408.578.3022 Fax 408.578.9383

©2011 Neptune Systems - All Rights Reserved